

Table 9: Average Household Size*	42
Table 10: Big Horn County Housing Unit by Occupancy	43
Table 11: Vacancy Rates for Homeowners and Rental Units, 2010.	43
Table 12: Personal Income by Component - 2011	47
Table 13: Average Annual Wages	47
Table 14: Top 10 Private Employers (2011)	47
Table 15: Employment by Industry in Big Horn County (Annual Average, 2010)	48
Table 16: Fire Departments in Big Horn County	53
Table 17: Big Horn County Public School System	55
Table 18: Big Horn County Non-Public Schools	55
Table 19: Change in Highway Traffic 2001-2011	59
Table 20: Permitted Water Supply Systems in Big Horn County	61
Table 21: Big Horn County Soil Characteristics	70
Table 22: Water Well Information – Big Horn County:	71

**BIG HORN COUNTY, MONTANA**

**RESOLUTION # 2014-21**

**ADOPTING THE PROPOSED 2014 GROWTH POLICY**

WHEREAS, 76-1-604, MCA, authorizes the Board of County Commissioners to adopt or revise a growth policy; and

WHEREAS, the Board of County Commissioners requested the County Planning Board to prepare a growth policy, as authorized in 76-1-106, MCA; and

WHEREAS, the Big Horn County Planning Board prepared a growth policy in accordance with Title 76, Chapter 1, Part 6, MCA; and

WHEREAS, the proposed growth policy was made available for review at the Big Horn County Courthouse, Big Horn County Planning Office, and on the Beartooth RC&D website; and

WHEREAS, the Planning Board noticed and held a public hearing on the proposed growth policy in accordance with 76-1-602, MCA; and

WHEREAS, in accordance with 76-1-603, MCA, the Planning Board considered comments, recommendations and suggestions elicited at the public hearing held on February 19, 2014 and written comments received through the comment period ending on February 19; and

WHEREAS, the Planning Board made a recommendation to adopt the growth policy with revisions; and

WHEREAS, the proposed revisions were identified in a red-lined copy of the draft growth policy dated 03-14-2014 and included a new strategy for education to assist schools in identifying and prioritizing needed infrastructure improvements, adding wording to an existing housing strategy so the county could begin steps for a county-wide housing needs assessment, and other changes clarifying background information, and rectifying typographical errors; and

WHEREAS, the agenda for the Board of County Commissioners was posted for the April 9, 2014, Regular Commission meeting and the agenda included the growth policy resolution of intention; and

WHEREAS, the Board of County Commissioners considered public comment received at that meeting or received in writing prior to the meeting;

WHEREAS, in accordance with 76-1-604, MCA, the Board of County Commissioners adopted a resolution of intention to adopt the Big Horn County Growth Policy as recommended by the planning board on March 20, 2014; and

WHEREAS, the Board of County Commissioners' agenda was posted for the May 1, 2014, Commission meeting and the agenda included the adoption of the growth policy; and

WHEREAS, the Board of County Commissioners considered public comment received at that meeting or received in writing prior to the meeting;

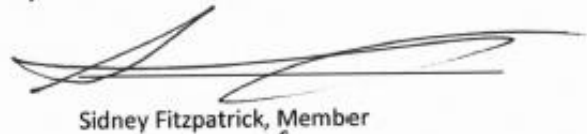
NOW, THEREFORE BE IT RESOLVED that the Big Horn County Board of Commissioners hereby adopts the growth policy as recommended by the planning board and as identified in the resolution of intention.

BOARD OF COMMISSIONERS

BIG HORN COUNTY, MONTANA



John Pretty On Top, Chairman

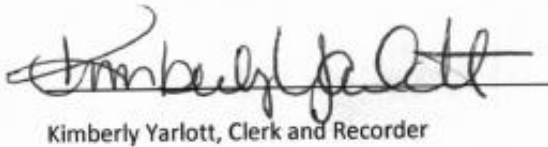


Sidney Fitzpatrick, Member



Chad Fenner, Member

ATTEST:



Kimberly Yarlott, Clerk and Recorder

# 1. PURPOSE AND SCOPE

## 1.1 PURPOSE

The purpose of this document is to update the 2002 Big Horn County Growth Policy with new information. Growth policies are comprehensive plans, primarily for the purpose of guiding land use and infrastructure development. As stated in Montana statute, a growth policy guides development; it is not a regulatory document and does not confer any authority to regulate that is not otherwise authorized in state law.

## 1.2 GEOGRAPHIC SCOPE

This Growth Policy is for the jurisdictional area of the Big Horn County Planning Board. This area includes all of Big Horn County, except for lands outside of the Big Horn County Planning Board area:

- the two incorporated towns of Hardin and Lodge Grass;
- City-County Planning Board jurisdictional area around the town of Hardin; and
- lands not under the county’s jurisdiction—including specific areas on the Crow and Northern Cheyenne Indian Reservations, tribally owned lands, state and federal lands (refer to the land ownership map – Figure 10 in Chapter 5.1).

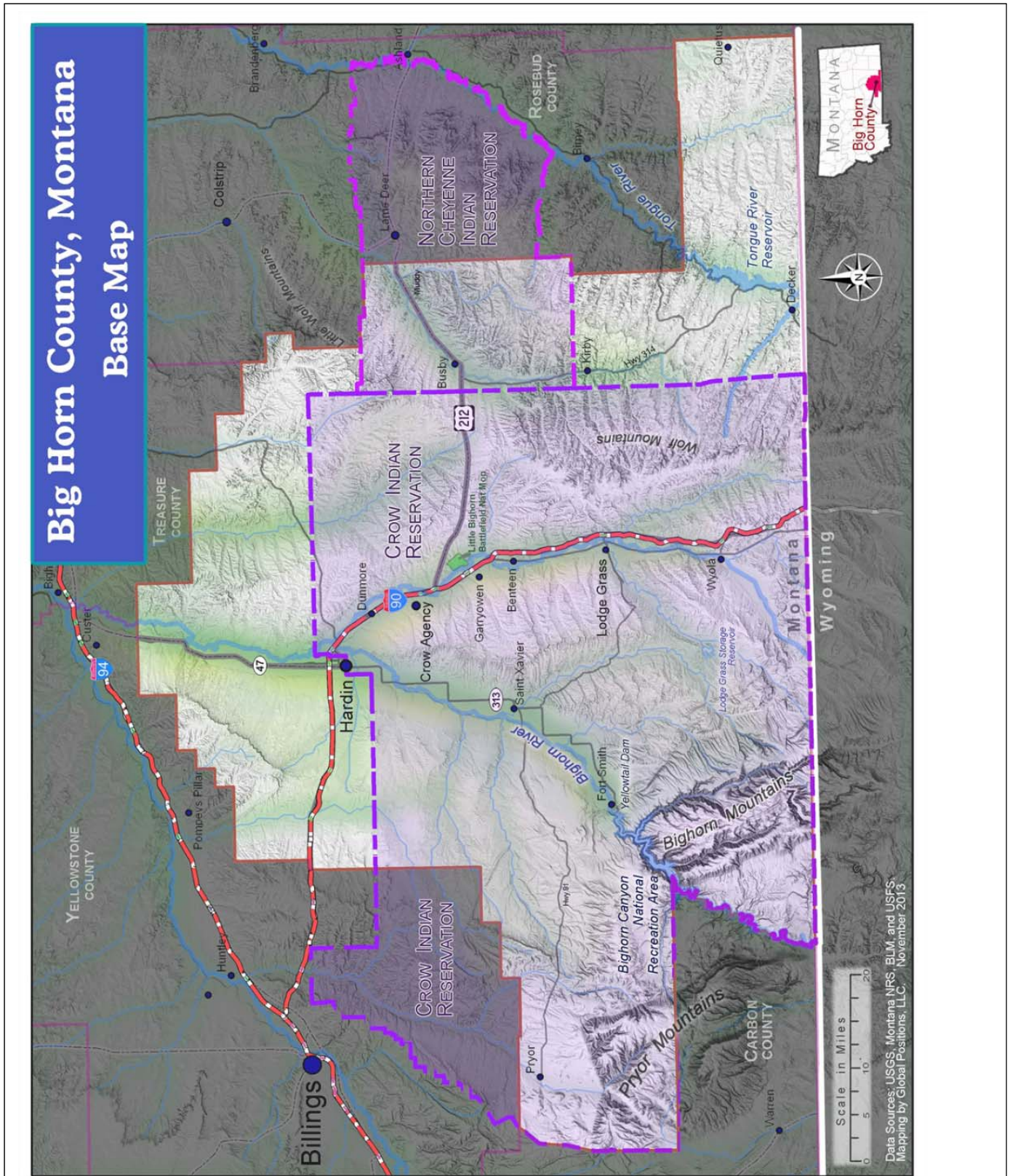
## 1.3 AUTHORITY

The authority and requirements for Big Horn County to adopt a growth policy are established in Montana state law, Title 76, Chapter 1, Part 6 “Growth Policies.”

## 1.4 COMPREHENSIVE PLANNING IN BIG HORN COUNTY

Big Horn County adopted a comprehensive plan in 1974. The county updated its comprehensive plan with the 2002 Growth Policy. The existing growth policy is over 10 years old. After reviewing the 2002 growth policy, the Big Horn County Planning Board determined that changes were necessary because of changes in the county as well as new requirements enacted into state law after 2002.

The Big Horn County Planning Board is appointed by the County Commissioners. The County Planning Department is staffed with a subdivision administrator, who also functions as the county sanitarian and county floodplain administrator. The county contracts for review of land divisions.



**Figure 1: Big Horn County Base Map**

Note: Jurisdiction of the growth policy is limited on the Crow and Northern Cheyenne Reservation, other tribally owned lands, state and federal lands – refer to land ownership Map—Figure 10 in Chapter 5.1